

Local area networks (LAN) play a crucial role in ensuring the stability and performance of all applications within your company. However, managing a large number of LAN ports is expensive and time-consuming. As your networks continue to grow in complexity, STL Communications Total Network Monitoring provides critical information on the health and performance of your network so **you** have more time to focus on your core business competencies while **we** handle the operational details.



OPTIMIZE THE HEALTH OF YOUR NETWORK

- ✓ End to end service
- ✓ Using the latest LAN management
- ✓ Compliance and technical metrics reporting
- ✓ Two levels available
- ✓ Proactive monitoring

STL Communications Total Network Monitoring provides end-to-end service that includes proactive monitoring, reporting of compliance and technical metrics for your ongoing operations. STL leverages the latest LAN management solutions from market-leading hardware partners.

SOLUTION COMPARISON MATRIX

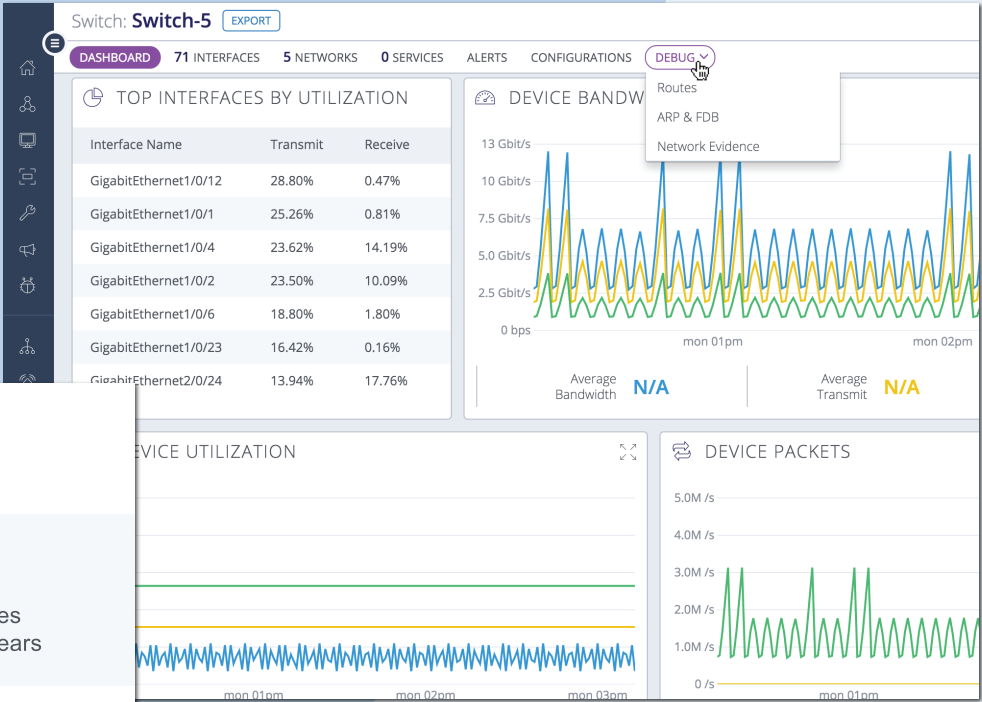
	PREFERRED \$31.95 per device/month	PREFERRED PLUS \$45.95 per device/month
A real-time inventory of all the technology on your network	Yes	Yes
Automated backups of network infrastructure configurations	Yes	Yes
Automated troubleshooting tools and secure remote access	Yes	Yes
Two-factor authentication, granular control of user access, and secure management of your network credentials	Yes	Yes
Fully managed moves and changes	No	Yes
Notifications and remediate issues	No	Yes

*Multi-site requires site survey and may incur additional cost
 *Devices monitored: routers, switches, and firewalls

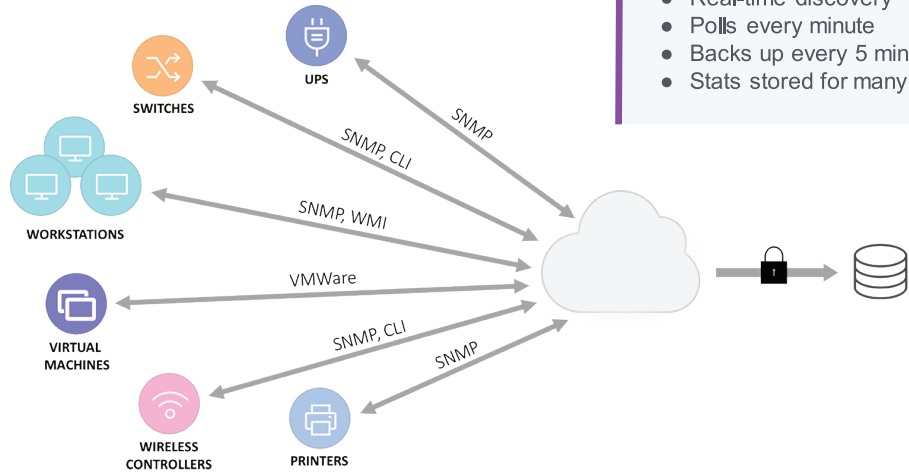
Managing servers and endpoints is important — but it's not enough on its own; you expect and need more. We provide the visibility and control of a traditional RMM (remote monitoring and management) solution but also a deeper look into infrastructure devices like routers, switches, and firewalls. Now you can see everything.



KNOW BEFORE YOUR USERS WHAT'S GOING ON IN YOUR NETWORK!



How it works



- Real-time discovery
- Polls every minute
- Backs up every 5 minutes
- Stats stored for many years